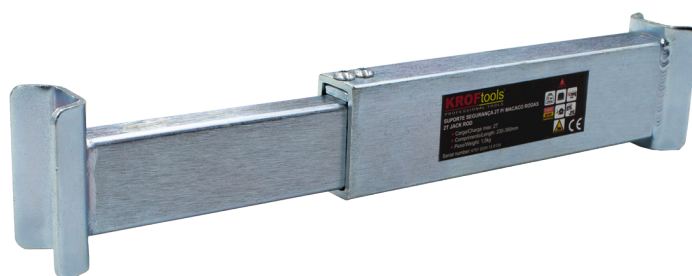


CE

Language

EN

2T JACK ROD REF.: 4757



Operating manual and instructions
General information

Name:	
Address:	
Model:	



**DECLARATION
OF CONFORMITY**



We:

KROFTOOLS
Parque Industrial da Pousa
Rua da Devesa, n.º 8
4755-307 Martim,
Barcelos

Declare under our sole responsibility that the product:

Part Number: 4757
Description: 2T JACK ROD
Serial No:-

To which this declaration relates is in conformity with the following directive (s):

Directive 2006/42/EC

EN ISO 12100:2010; EN 1494:2000+A1:2008

IssueDate: 18/11/2024

José Bárbara
CEO

CAUTION : To reduce the risk of injury, the user should read the instruction manual

USE :

Setting up :

- Lift the vehicle using your jack, respecting its instructions for use. Remember to lift the vehicle slightly more than required to allow the device to find a notch.
- Press the handle on the safety stand and compact the device.
- Place the device between the wheel axle and the axle of the jack support block as shown in the photo :



- Press down on the handle, the spring will press the device against the jack pins; then release the handle.
- Slightly unlock the jack, lower the vehicle until you are sure that one notch on the stand is engaged, and immediately stop the jack lowering.

SPECIFICATIONS :

- Max. load capacity: 2T
- Usable length: from 200 to 350mm approximately, in 25mm increments
- Total length: from 230mm to 380mm approx.
- Weight: approx. 1.5kg

Origin RPC

Removal :

- Raise the vehicle slightly using the jack.
- Press the handle on the safety stand, then compact and release the unit.

MAINTENANCE :

This appliance requires no further maintenance.

Repairs to parts inside the appliance should be carried out by a specialist.

Parts should be cleaned using a soft damp cloth and a mild soap. Do not use detergents, alcohol, petrol, etc...

TRANSPORT AND STORAGE :

If the appliance is to remain unused for a long period, store it in a dry place at a temperature below 40°C, secure and out of the reach of children.

GUARANTEE :

This product is guaranteed for a period of 2 years from the date of purchase against all defects in material or workmanship. The warranty covers replacement of defective parts. Proof of purchase must be provided (copy of invoice or receipt). This guarantee does not apply in the event of use of the appliance that does not comply with standards, or in the event of damage caused by unauthorised

intervention or negligence on the part of the purchaser. This guarantee does not affect any legal rights under current national legislation governing the sale of consumer goods.



SAFETY INSTRUCTIONS :

General safety warnings for the tool.

WARNING Read all safety warnings, instructions, illustrations and specifications supplied with this appliance. Failure to follow the instructions listed below may result in serious personal injury.

Keep all warnings and instructions for future reference.

- Safety and operating instructions must be followed. Read the instructions for the jack used with this appliance.
- Keep children and bystanders away when using the appliance. Distractions can put you at risk
- Remain vigilant, watch what you are doing and use common sense when operating the equipment. Do not use the device when you are tired or under the influence of drugs, alcohol or medication.
- Keep the appliance out of the reach of children and do not allow persons unfamiliar with the appliance and these instructions to use it.